

Instructions for accessing graphical Mosaic Linux desktop remotely

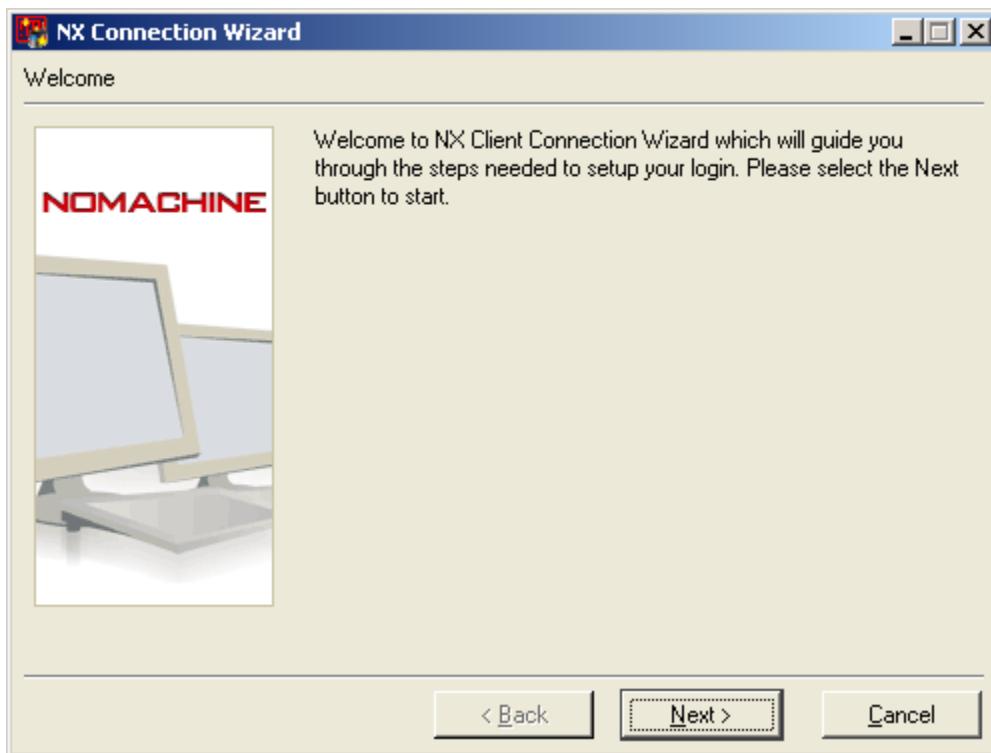
Updated: July 18, 2008

Install & Configure the NoMachine NX client

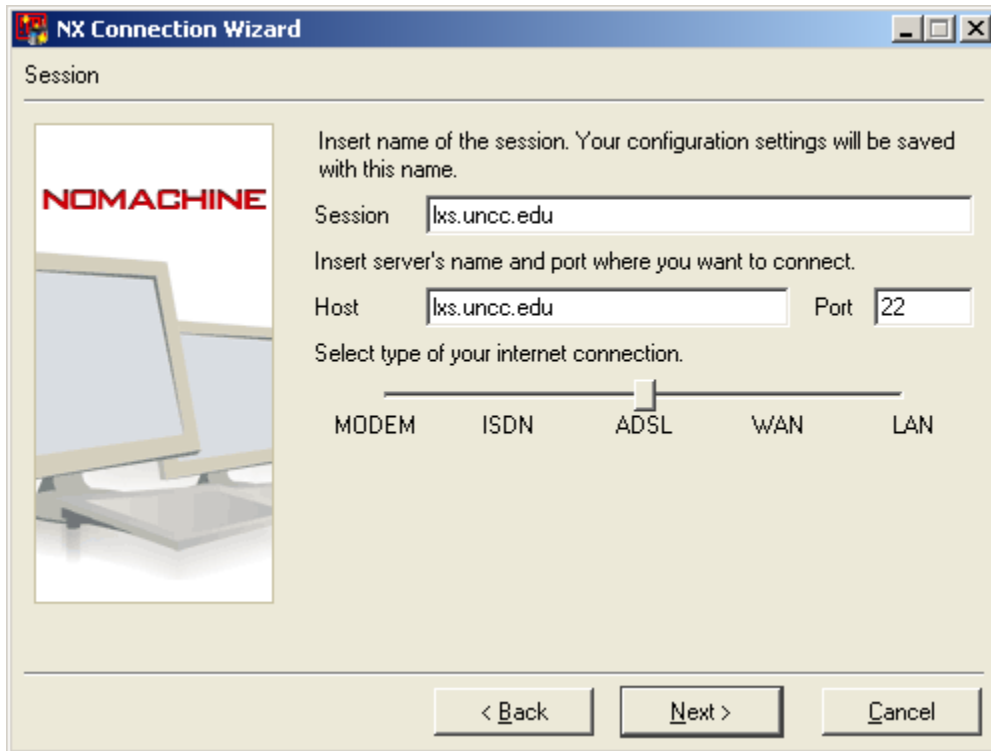
Download and install the NoMachine NX client from <http://www.nomachine.com/download.php> that is appropriate for your local computer. If you are using windows, please download and install the 75dpi font package as well.

If you need to run Mathematica or Mentor Graphics Design Manager (DMGR) on the Mosaic Linux server, please download the file from http://coe.uncc.edu/mosaic/mosaic_account_services/work_from_home/graphical_linux/extra-nx-fonts.zip and extract the contents into the "C:\Program Files\NX Client for Windows\share\fonts" folder. If you need a program to expand the zip file, we suggest the free tool, 7zip, from <http://www.7-zip.org/>

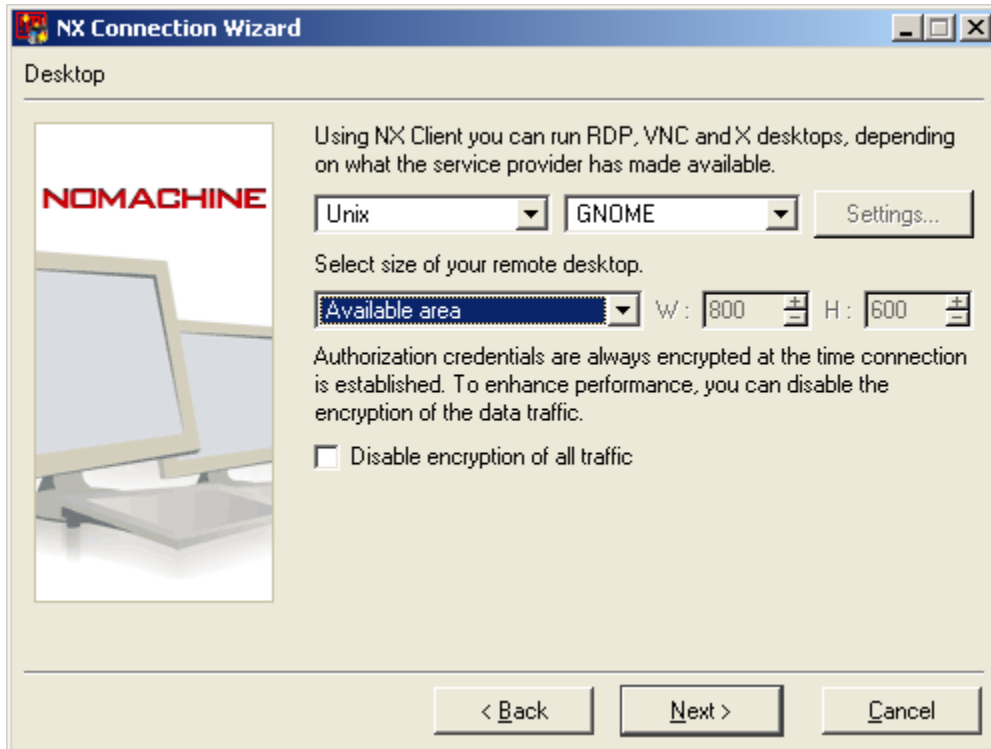
Run the Connection Wizard by double-clicking its icon on the desktop or from the start menu.



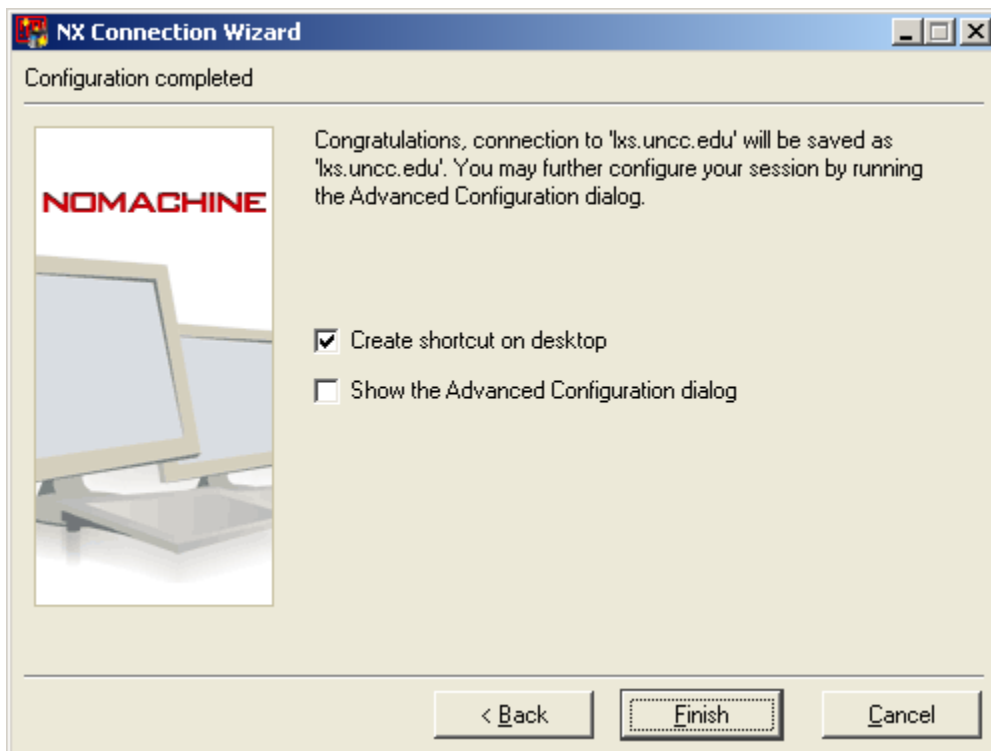
Click Next



Enter "lxs.uncc.edu" in the session field and "lxs.uncc.edu" in the host field. Use the slider at the bottom to select the speed of your Internet connection. ADSL and Cable Internet are synonymous in this context.



Select "Unix" for the first drop-down box. Select "GNOME" for the second drop-down box. Select the size of the window that you wish to use for the remote session. Click Next.



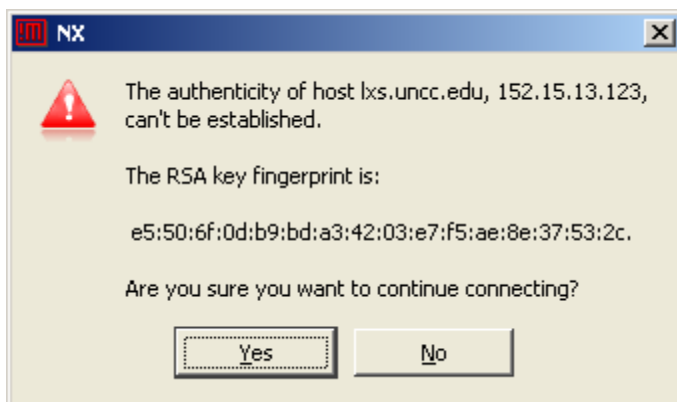
Click Finish.

Run the client to access Mosaic Linux

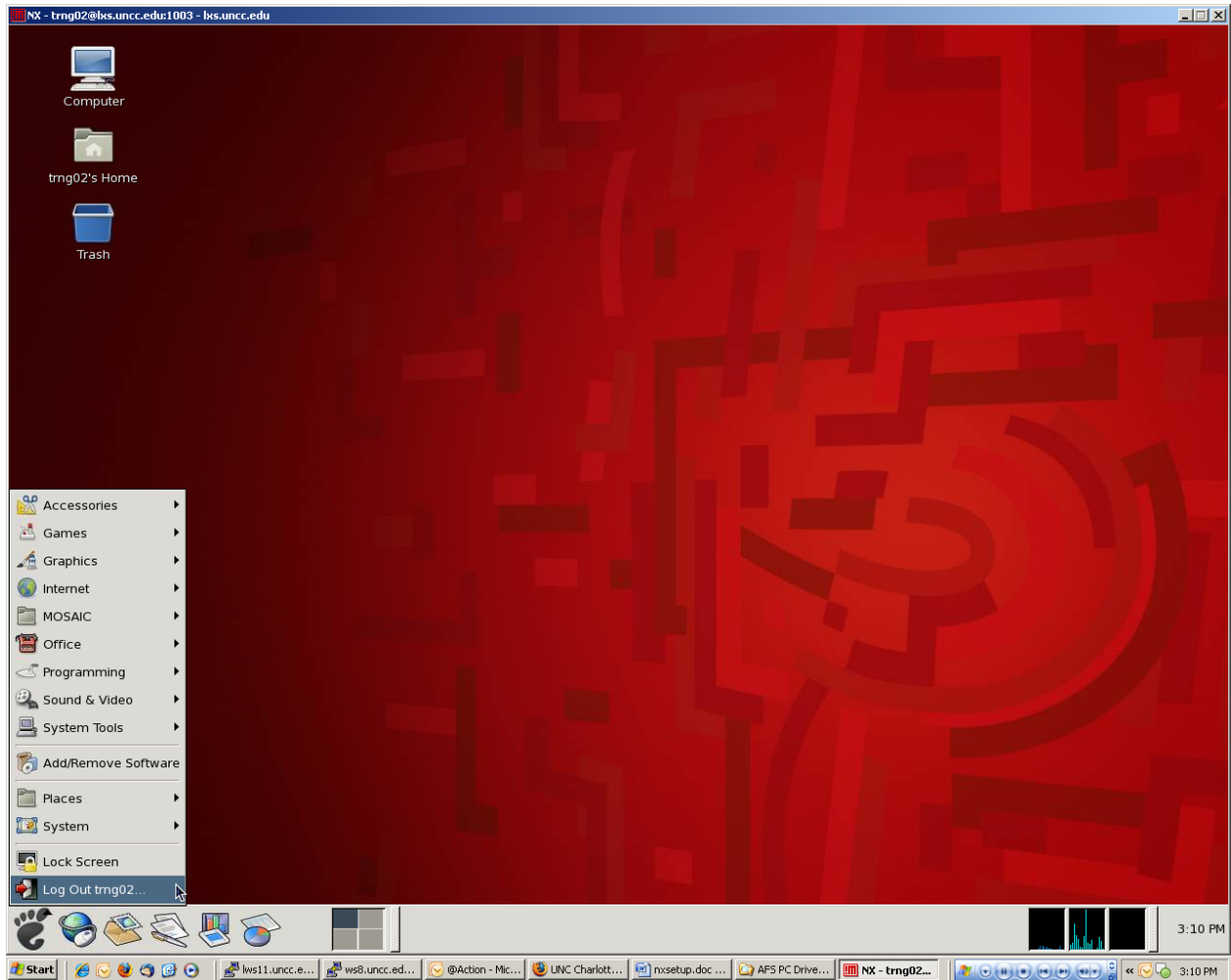
Double-click the desktop icon for “lxs.uncc.edu”.



Enter your mosaic username and password, then click the “Login” button.



Click “Yes”



Your Linux desktop should now be visible. Use it as you would a Linux Exceed session.

When you are done working in Linux, close all programs and choose “Logout” from the gnome menu in the bottom-left corner of the screen.

Troubleshooting

- Characters in Emacs don’t show up correctly. Solution: install the 75dpi fonts from the NX web site. For Linux, be sure that the 75dpi X11 fonts are installed from the OS install disc.
- If the screen doesn’t appear or your session immediately closes, check your settings and be sure they are set to Gnome, not KDE.
- Mathematica and MGC Design Manager require certain fonts to be installed on the user’s local machine to work properly. Please see the instructions at the top of this file for downloading and installing the appropriate font files.