

Optimizing MosaicAnywhere Performance

The default connection profile for MosaicAnywhere uses a 16 bit color depth. Although using this color depth offers the best visual representation for the connection, using a lower color depth can result in a more responsive connection. To set the color depth to a lower value, click on the machine you wish to connect to on MosaicAnywhere and save the file to your desktop as opposed to opening the file.



Alternatively you can right click on the machine of interest on the MosaicAnywhere page and choose the Save Target as option from the menu, taking special note of the location you save the file.



MosaicAnywhere

Remote Desktop Workstation Lab
Mosaic Computing Services
The William States Lee College of Engineering
University of North Carolina at Charlotte
Availability and Status Web Page

[Click here for additional information about Mosaic Anywhere](#)

Last page refresh: Mon Oct 26 13:32:38 2009
Last dataprobed on: Mon Oct 26 13:31:51 2009

80 Total, 43 Available, 37 Occupied, 0 Exceptions



rws1
Available



rws22
Available



rws29
Available



rws40
Available



rws52
Available



rws74
Available



rws6
Available



rws24
Available



rws32
Available



rws43
Available



rws53
Available



rws75
Available



rws13
Available



rws25
Available



rws34
Available



rws44
Available



rws55
Available



rws76
Available



rws14
Available



rws26
Available



rws35
Available



rws45
Available



rws71
Available

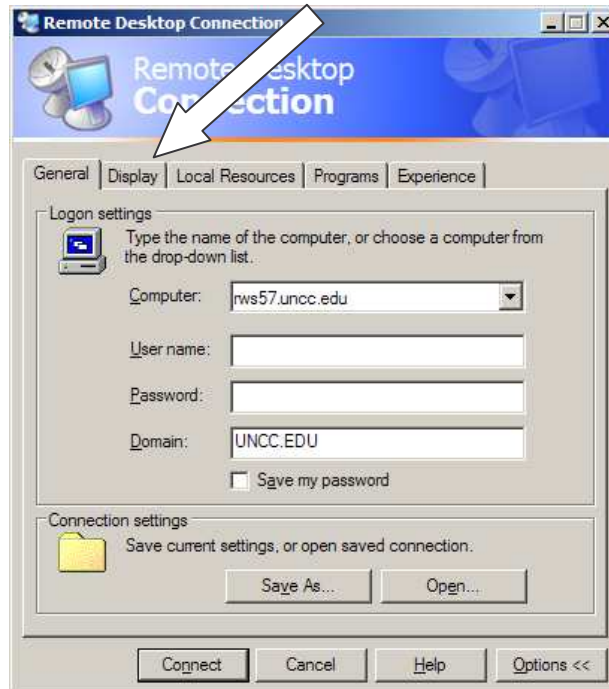


rws77
Available



Right Click
and select
Save Target
As

Locate the rdp file downloaded in the previous step and right click on the file. Select the Edit option from the right click menu. You will be presented with the following screen:



Click on the display tab and adjust the color depth to 256 Colors as shown below. This may significantly increase performance on slower machines/connections but may result in a noticeable change in the appearance of some windows. Also decreasing the resolution of the remote session from full screen to 1024x768 may improve performance as well depending on the display resolution running on the client machine connecting to MosaicAnywhere. This can be done by dragging the Remote desktop Size Slider to the left as shown below. Simply click Connect and the new settings will be used for the new connection. Optionally the connection settings can be saved via the general tab.

